



Established 1925

KANSAS GEOLOGICAL SOCIETY

BULLETIN

Volume 88 Number 2

March - April 2013

IN THIS ISSUE

Memorials:

Dr. John Gries

Brian Kirby

Page 16

Profile: Anthony Walton

Page 10

A DIFFERENT VIEW OF GEOLOGIC TIME

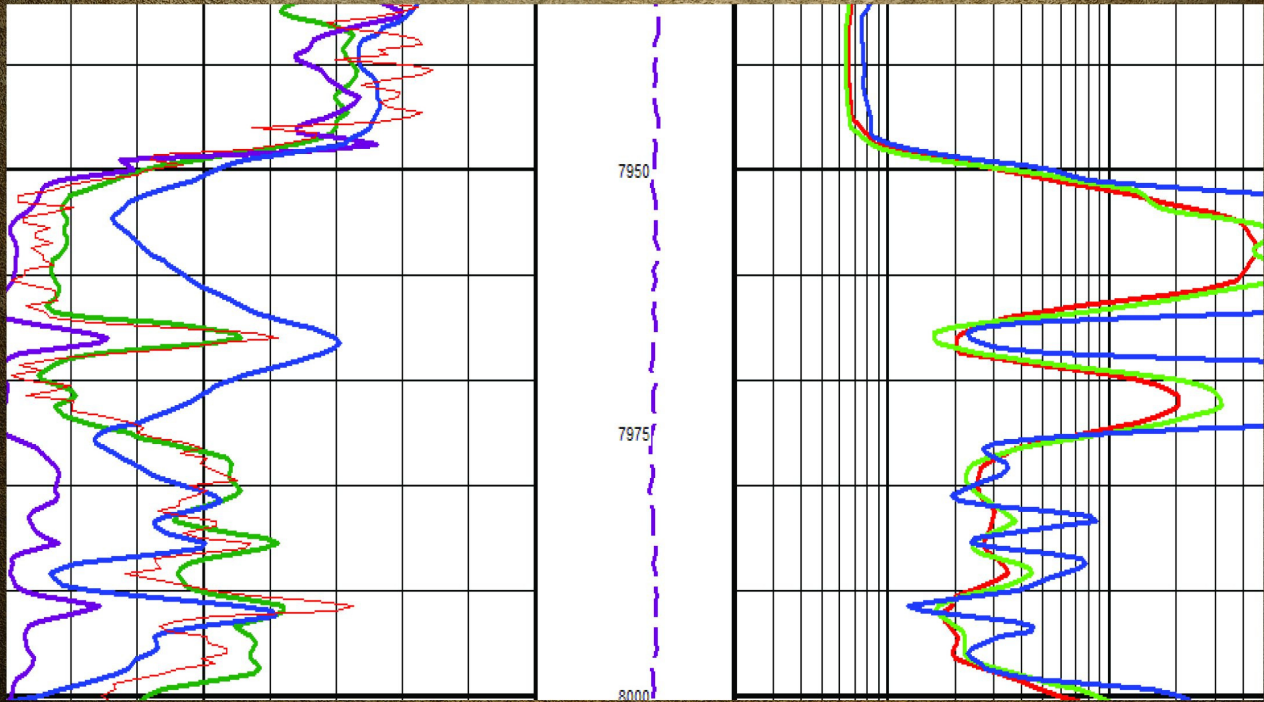
Lawrence H. Skelton

Page 15



Past Presidents

TGS DELIVERS LAS PLUS



More than just your standard LAS.

LAS Plus upgrades the standard LAS to a full curve suite, including all available gamma ray, spontaneous potential, caliper, resistivity, conductivity, sonic, density, density correction, neutron, tension and rate of penetration curves. This data has been closely examined for standardization and quality assurance and is ready for cross-section, formation evaluation and petrophysical analysis.

Access LAS Plus data quickly and easily through the online well data portal, LOG-LINE Plus®!



Learn more at WWW.TGS.COM

Table of Contents

Features

Profile - Anthony Walton.....	10
“A Different View of Geologic Time”, L.H. Skelton	15
Memorials.....	16

Departments & Columns:

KGS Tech Talks	4
President’s Letter	7
Advertiser’s Directory	8
From the Manager.....	9
KGS Board Minutes	14
Professional Directory	19 & 20

ON THE COVER:

Thanking those that have served the Society. From the top; Kent Scribner, outgoing President, Dr. John Gries receiving Teacher of the Year Award from Debra FitzGerald, Honorary Members and Past Presidents. See more banquet photos throughout Bulletin.

CALL FOR PAPERS

The Kansas Geological Society Bulletin, which is published bimonthly both in hard-copy and electronic format, seeks short papers dealing with any aspect of Kansas geology, including petroleum geology, studies of producing oil or gas fields, and outcrop or conceptual studies. Maximum printed length of papers is 5 pages as they appear in the Bulletin, including text, references, figures and/or tables, and figure/table captions. Inquiries regarding manuscripts should be sent to Rebecca Radford, manager@kgslibrary.com or mailed to 212 N. Market, Ste. 100, Wichita, KS 67202. Specific guidelines for manuscript submission appear in each issue of the Bulletin, which can also be accessed on-line at the Kansas Geological Society web site at <http://www.kgslibrary.com>

SOCIETY Technical Meetings

Mar. 5— Kurt Rottman, “TBA”

Mar. 19— Andrew Wray, Schlumberger, “TBA”

Mar. 26—Dr. Hendratta Ali’s Fort Hays Class

Apr. 1— Dr. Jim Puckette class from Oklahoma State University

Apr. 15—Kurt Rottman, “TBA”

Apr. 22—Brian Cardott, Oklahoma Survey, “TBA”

May 7—Charles Wickstrom, “TBA”

May 28—Larry Richardson’s WSU class

Location for Technical Meetings

*All KGS technical presentations are held at 12:30 p.m. at the **Wichita Bar Association**, located at **225 N. Market**, ground floor conference room, unless otherwise noted.*

Note: For those geologists who need 30 points to renew their licenses, there will be a sign-in sheet



BOARD OF DIRECTORS

PRESIDENT Dave Clothier	PRESIDENT-ELECT Brian Fisher
SECRETARY Paul Ramondetta	TREASURER Bob Bayer
DIRECTORS Kent Scribner Tim Hellman Frank Mize	ADVISORS Kent Crisler Jon Callen

COMMITTEE CHAIRMEN

<u>Advertising</u>	Kent Scribner
<u>Advisory</u>	Kent Crisler Jon Callen
<u>Annual Banquet</u>	Bob Bayer
<u>Budget Committee</u>	Bob Bayer
<u>Bulletin</u>	Rebecca Radford
<u>Continuing Education</u>	Robert Cowdery
<u>Distinguished Awards</u>	Kent Scribner
<u>Environmental</u>	Kent Matson
<u>Field Trip</u>	Larry Skelton
<u>Fishing Tournament</u>	Randy Teter
<u>Future Plans</u>	Ernie Morrison
<u>Golf</u>	David Barker
<u>Historian</u>	Larry Skelton
<u>Investment</u>	Bob Bayer
<u>Library</u>	Roger Martin Ted Jochems
<u>Membership</u>	Larry Friend
<u>Nomenclature</u>	John H. Morrison, III
<u>Picnic</u>	
<u>Public Relations</u>	Robert Cowdery
<u>Shooting Tournament</u>	Larry Richardson
<u>Technical Program</u>	Robert Cowdery
<u>Ticket Sales</u>	Bill Shepherd
Walters Digital	

A.A.P.G. DELEGATES

Robert Cowdery 2012	Douglas Davis 2012
------------------------	-----------------------

BULLETIN STAFF

EDITOR Rebecca Radford—Interim	(316) 264-2985
ADVERTISING Kent Scribner Stelbar Oil Corp.	(316) 264-8378
PROFILES/MEMORIALS Robert D. Cowdery Consultant	(316) 267-9030
EXPLORATION HIGHLIGHTS John H. Morrison, III Independent O&G	(316) 263-8281

STATE SURVEY Rex Buchanan KS Geological Survey	(785) 864-3965
---	----------------

SOCIETY NEWS KGS Library	(316) 265-8676
------------------------------------	----------------

EDITOR EMERITUS Wes Hansen	(316) 863-7313
--------------------------------------	----------------

K.G.S. LIBRARY

PHONE 316-265-8676 **FAX** 316-265-1013
email: frontdesk@kgslibrary.com or
Web: www.kgslibrary.com

LIBRARY MANAGER
Rebecca Radford 265-8676
manager@kgslibrary.com

The KGS *Bulletin* is published bi-monthly by the Kansas Geological Society, with offices at 212 North Market, Wichita, Kansas 67202 Copyright 2010, The Kansas Geological Society. The purpose of the *Bulletin* is to keep members informed of the activities of the Society and to encourage the exchange and dissemination of technical information related to the Geological profession. Subscription to the *Bulletin* is by membership in the Kansas Geological Society. Limited permission is hereby given by the KGS to photocopy any material appearing in the KGS *BULLETIN* for the non-commercial purpose of scientific or educational advancement. The KGS, a scientific society, neither adopts nor supports positions of advocacy, we provide this and other forums for the presentation of diverse opinions and positions. Opinions presented in these publications do not reflect official positions of the Society.

**TRILOBITE
TESTING INC**

Eleven Trucks Serving
Kansas - Colorado - Texas
Nebraska - Illinois

Slickline services using the same
Alpine Electronic Pressure
Guages as used on DST's

Back pressure testing (G1 & G2)
DST's

1-800-728-5369

FAX: 1-785-625-5620
trilobite @eaglecom.net

SHOPS LOCATED IN:

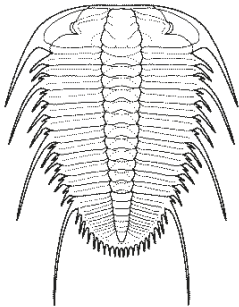
Hays, KS

Scott City, KS

Pratt, KS

Hugoton, KS

Clay City, IL



CAN YOU NAME THE CRITTER?

Sponsored by Trilobite Testing, Inc.

Is your paleo up to date?

If you know the name of the trilobite,
submit your guess via e-mail to
manager@kgslibrary.com

Remember that *Trilobite Testing* is
sponsoring your efforts, so be sure to thank
Paul Simpson the next time you see him.

**Tom Dudgeon correctly identified the critter
in the last issue. Congratulations Tom!**

“Odontopleuridae kettneraspis”

**Bulletin committee members and PhD's in
Paleontology are prohibited from entering.**

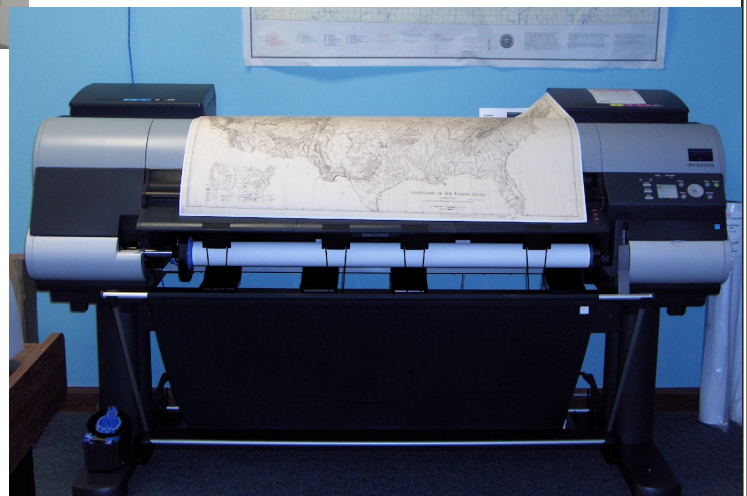


**Bring in your old maps,
we have scanned several
and they look great!**

Our pricing Special:

Solid color @ \$4.00/sq. ft.

Line maps w/color @ \$3.00/sq. ft.



We've upgraded!!!

We now have a 44" Context Scanner

AND

A 44" Cannon Plotter

President's Letter

Dear KGS Members,

The year is well under way, and we've already accomplished a lot as a Society. Bob Bayer and his committee did an excellent job on the Annual Banquet, where we inducted Lynn Watney as an Honorary Member of our Society. The attendance was good, and everyone enjoyed the fellowship and excellent food provided by the newly re-decorated Wichita Petroleum Club.



Our busy schedule of Technical Meetings is well underway, thanks to the tireless efforts of Bob Cowdery. We've had a number of interesting talks, and attendance has been strong at all meetings. We did have enough snow to postpone a meeting, but will re-schedule the speaker for later in the spring.


I'm making plans to attend the AAPG Annual Convention in Pittsburg in May. I hope that I will see some of you there. It looks to be an interesting convention, with a lot of presentations dealing with resource plays. Doug Davis, who is chairman of our Society's Mid-Continent AAPG Section Meeting this fall, plans to attend. I'm sure he'll bring back a lot of great ideas, and incorporate them into our section meeting.

At the last KGS Board meeting, the Board passed a motion to form a committee to review our options regarding the KGS Library lease. As I'd reported to you in my first letter as your President, our current lease expires at the end of 2013. Chuck Brewer has agreed to chair this committee. He and his committee will look at the possibility of moving the Library into a new space, as well as negotiating improvements on an extension of our current lease. We are in a very good financial position, and may have the opportunity to purchase rather than lease space. I made an announcement regarding this potential change at the last technical meeting, and would invite the input of the membership regarding our options. Where would you like the Library to be located? What improvements would you like to see?

On a final note, the call for papers for the Mid-Continent AAPG Section Meeting has gone out, with a deadline of March 15th for Abstracts. I would encourage any of you who have something to offer to get your Abstract in.

Until the next bulletin, I hope the weather doesn't interfere too much with all of your operations, and that you're busy finding lots of new production.

Respectfully Submitted,
Dave Clothier

KANSAS STATE UNIVERSITY

GEOLOGY
 DEPARTMENT

GRADUATE EDUCATION
for active professionals

Through: Leading to:
 Workshops Academic credits
 Field Trips Certificates (pending)
 Distance Education M.S. degree

With specializations in:
 Petroleum Geology
 Groundwater
 Exploration Geophysics
 Environmental Geochemistry

Information:
 KSU Continuing Education: www.dce.ksu.edu
 KSU Geology Department: www.ksu.edu/geology
 KSU Graduate School: www.ksu.edu/grad
 or e-mail George Clark, interim dept. head: <grc@ksu.edu>

ADVERTISER'S DIRECTORY

	<i>page</i>
Allied Cementing Company, Inc	23
American Energies Corp. Nitrogen Rejection	12
Breckenridge Exploration Company	17
Duke Drilling	23
GeoCare Services AAPG	13
Kansas Geological Foundation	22
Kansas State University	8
Lockhart Geophysical	23
Lone Star Geophysical Surveys	18
MJ Systems	21
MBC Well logging	23
Murfin Drilling Company, Inc	23
Neuralog	17
PARAGON Geophysical Services, Inc	13
Pratt Well Service	17
Professional Directory	19-20
Sterling Seismic Services	11
Sunrise Oilfield Supply	23
TGS-NOPEC Geophysical Company	2
Tomcat Drilling	23
TRES Management	12
Trilobite Testing	6
Walters Digital Library	8 & 17
Weatherford	27
Well Enhancement Services	12

Log in to
 Walters Digital Library
 At
www.kgslibrary.com

Log in as our guest
 and see the Society's Database

A convenient way to see what
 you might want to order!
 Call or email your order to:
 316-265-8676
frontdesk@kgslibrary.com

ADVERTISER'S RATES: 2012

Full Page	B&W	Color
6 issues	\$2,000	\$2,500
3 issues	\$1,080	\$1,325
1 issue	\$480	\$525
1/2 Page		
6 issues	\$1,000	\$1,500
3 issues	\$540	\$825
1 issue	\$225	\$350
1/4 Page		
6 issues	\$600	\$900
3 issues	\$325	\$525
1 issue	\$150	\$250
1/8 Page		
6 issues	\$300	\$500
3 issues	\$175	\$325
1 issue	\$75	\$185
Professional Ad (Business Card)		
6 issues	\$90	\$180

For one-time ads, call Rebecca at 316-265-8676

From The Manager

Dear Members,

For the first time in 12 years, we had to close the library due to weather. The snow was much needed and much appreciated moisture but I think we are all ready to have it melt away and get on with spring now. I apologize for any inconvenience this caused but with our on-line digital library, many of you just stayed in and worked on-line and I am so glad we can provide that service to our membership.

We have ramped up our scanning of the East Ranges so keep checking on-line to see what we have done. This will take awhile to finish but we will just keep plugging away until it is completed.

We also have 3 WSU geology students dedicated to the Foundation's Integration Project. They are making great progress and these files are being added to the paper files as well as the Walters Digital Library database. We love hiring students and we hope that by doing so, you will come in and meet them and if you are in a position to hire them away from us, we welcome you to do so. They learn a lot while working here in the library and we hope to give them the opportunity to find their "real jobs" out in the industry.

Last year we had discussed changing our Annual Picnic to sometime in the spring but one little problem.....we don't have a chair. So, if you would be interested in helping the Society, this is a fairly easy way to do so, step up and volunteer to chair this event.

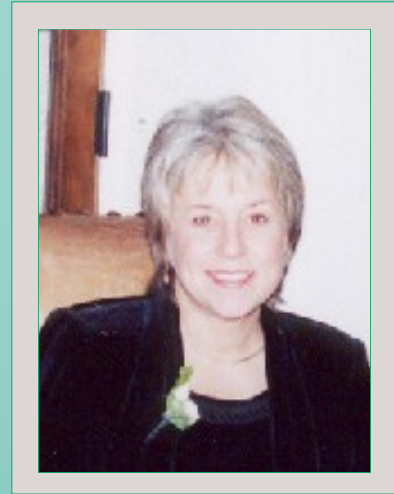
On the cover of this issue are some photos from our Annual Banquet. We had a great time this year as always with great wining and dinning from the Petroleum Club.

Happy Spring to all of you and I hope you have great success in all your endeavors!

Respectfully submitted,

Rebecca Radford

Manager



**Let Us Print Your Geo Reports
And Save Your Time For Finding More Oil & Gas**

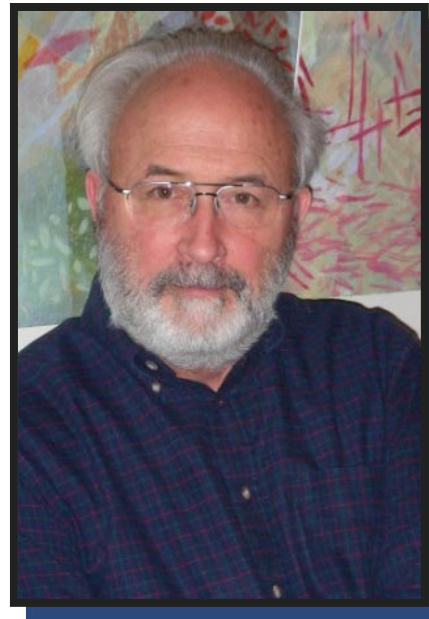
Top Quality Color Printing For Our Membership

Email your files to: tammy@kgslibrary.com

Profile — Anthony (Tony) Walton

This will be an interesting profile of a university professor who has a strong relationship and interest in the petroleum industry. Tony Walton was born April 10, 1943 in Moorestown, New Jersey. His father was a banker there and his mother was a housewife. He has a brother (Charles) who lives in Swedesboro, New Jersey, and had a sister (Beth Ann) who died in 1998.

Tony attended grade school and graduated from high school in Moorestown. In 1965 he received his BA Degree from Lafayette College located in Easton, Pennsylvania, where he lettered in swimming. He enrolled at the University of Texas, Austin, receiving an MA Degree in 1968 and his PhD in 1972. During his time at Austin he was acquainted and a friend of both John Gries, recently deceased, and Robbie Gries, John's wife at that time. When asked which professor influenced him the most and which professor was the "biggest character: his answer is the same, Dr. Bob Folk, University of Texas. Following active participation in the ROTC, he spent three months in the U. S. Army. After completion of his higher education, he spent a summer working for the Bureau of Economic Geology, Austin. Dr. Walton was then a professor of Geology at Vanderbilt University for three years. He also worked in uranium exploration in Caspar, Wyoming for Conoco for a summer.



In 1969 he married Ann Kershner of Houston. They have two children: Steven, residing in Olathe, Kansas, and Betsy, who resides in Portland, Oregon. Steven has a son and Betsy has twin girls now 16 months old.

Tony teaches Introductory Geology, Petroleum and Subsurface Geology, Volcanology, Petroleum Engineering Design (which is also a geology course), and a graduate course in interpreting sandstone deposits. The petroleum courses make extensive use of industry standard computer programs to analyze data from real oil fields. In 1998, he started a new course, Geology 360, Field Investigations, as a means of introducing beginning geology students—freshmen and sophomores—to real rocks. The two-week trip travels across Kansas, Colorado, Utah, and Wyoming visiting many different and geologically important sites.

His research has focused on stratigraphy, deposition, and diagenesis of sedimentary rocks, especially sandstones and sedimentary rocks that contain lots of material from volcanoes, in addition to recent efforts to understand and elucidate oil reservoirs in Kansas. From 1987 until 1999, he was Chair of the Department of Geology at KU. He has served on many committees associated with the University. He is a long-time member of the Board of Directors of DOSECC, Inc. and has served as its chairman. DOSECC is an international consortium of universities that has been an advocate for continental scientific drilling and has implemented several projects using specialized equipment and in difficult environments. He has been active in the Rotary Club. His other activities include yard work and reading, and it appears that he is a voracious reader.

When asked why he became a geologist and commenced this career, his answer is that he made the decision while still enrolled in High School, and you are able discern while visiting with him that he has never regretted that decision. At 70, the question of his retirement sometimes comes up. While looking forward to retirement in a few years, he is enjoying the courses he teaches for the present and hopes to remain active in the petroleum geology of Kansas as well as geology more generally in the future.

Experience, Integrity, Innovation...



SEISMIC SERVICES, LTD.

www.sterlingseismic.com

**Renegade Seismic Studio Refraction Statics
Z-White Spectral Enhancement
Tsunami Pre-Stack Time Migration**

Projects from one square mile "Postage Stamp" 3Ds to the 1,100 square mile nine 3D merge through PSTM we completed in 2006, no project is too small or too big. All projects are given the same attention to detail that we have become known for.

**Structural or stratigraphic, we've got the experience
to provide you with a superior dataset.**



303-347-9011



WOULD YOU LIKE TO INCREASE YOUR PRODUCTION AT A FRACTION OF THE COST OF HORIZONTAL DRILLING?



Well Enhancement Services, LLC is jetting laterals utilizing new technology and coiled tubing. We now have the ability to place hundreds of gallons of acid hundreds of feet away from the well bore. This allows us to not only enhance existing production but to produce reserves previously unreachable. It has established itself by repeatedly increasing production in both new and existing wells. Contact us for more information, questions or to schedule your next well with **WES**.



“Tap into success.....with WES”

Please Contact Us:

Phone: (785) 625-5155

Fax: (785) 625-4151

Field: (785) 259-4638

wesofhays@hotmail.com
Box 87, Schoenchen, KS 67667



MANAGEMENT INC.

7011 North Robinson
Oklahoma City, OK 73116

405-842-7888 Phone • 405-842-7885 Fax

www.tresmanagement.com
Email: tres@tresmanagement.com

Providing engineering, planning, and site supervision services for all phases of the oil & gas operations:
Drilling, completion, workover, and facilities

Current activity includes providing engineering and supervision on horizontal projects in the Mid-Continent, Rocky Mountain, and Gulf Coast regions.

WANTED



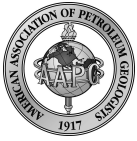
LOW BTU GAS to Buy or Treat

www.NitrogenRejectionUnit.com



American Energies Corporation

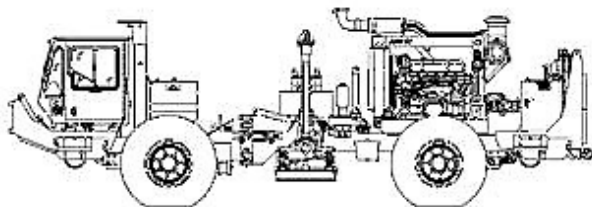
316-263-5785



Security for AAPG Members
& Their Families
Through Group Insurance

*Life
Health
Dental
Disability
Auto and Homeowner
Supplemental Plans*

AAPG's
GeoCare Benefits Insurance Program
P. O. Box 9159
Phoenix, AZ 85068-9159
800-337-3140
E-mail: geocarebenefits@agia.com
www.geocarebenefits.com



~The TOP CHOICE for 3D SEISMIC~

John H Beury III ~ Pres John Aguilar ~ Op. Mgr.

PHONE (316) 636 - 5552 FAX (316) 636 - 5572

3500 N. Rock Rd., Bldg 800, Suite B
Wichita, KS 67226

paragon@paragongeo.com

CALL FOR PAPERS NOW OPEN!

American Association of Petroleum Geologists
MID-CONTINENT SECTION MEETING 2013
New Technology Integration – Mature Petroleum Regions
(Deadline for Abstracts is Friday, March 15, 2013)

Presenters may submit preference for an oral or poster presentation. Abstracts will be considered for either oral or poster session unless otherwise designated by the author. NOTE: There will be a separate poster session on Tuesday for the Mississippian Symposium.

See website to submit abstracts: aapgms.org

Core Workshop

Chairman Martin Dubois invites you to contribute to a Core Workshop to be held on Sunday, October 13 from 9:30-4:30 pm. Please contact Martin about your intent to participate and then please submit an abstract that includes background and significance of the core by clicking on the "Create Core Workshop Abstract" button below.

Mississippian Symposium

This special symposium will be held on Tuesday October 15, consisting of an oral and poster session. Papers will feature Mississippian exploration, oil/gas reservoir facies and depositional systems, diagenesis and porosity evolution, reservoir completion/engineering practices, and reservoir stimulation practices. Submit an abstract for the Symposium by clicking on the "Create Mississippian Symposium Abstract" button below. Please contact Chair Sal Mazzullo for more information.

Oral Presentations

Two concurrent oral sessions will presented on Monday October 14 and one session on Tuesday, October 15, concurrent with the Mississippian Symposium. Themes of the sessions are listed below.

Students are most welcome to participate in sessions and will be so noted in the program. Student papers will be eligible for Robert Cowdery Best Student Poster and Oral Awards.

Contact: W. Lynn Watney, 785-864-2184.

General Poster Session

Presentation on any of the themes listed below are permissible and welcomed. Contact Poster Chair Ernie Morrison, 316-264-6366, for additional information.

Kansas Geological Society Board Minutes

The monthly meeting of the Board of Directors of the Kansas Geological Society was held on January 8, 2013 at the Wichita Petroleum Club. Mr. Clothier called the meeting to order at 11:40 AM.

FINANCIAL REPORT/MANAGERS REPORT

- A. **Treasurer's Report-** Mrs. Radford presented us with the Treasurer's report for December 2012. Mrs. Radford reported that the current CD's earned estimated \$652.30 interest. The next CD to mature will be on 4/1/2013 at the Andover State Bank. Mrs. Radford reported that the Rose Hill Bank CD matured on 12/17/2012, those funds were deposited in the Intrust Bank Money Market account. Incoming Treasurer, Bob Bayer, will shop for CD rates.
- B. **Manager's Report-** Mrs. Radford presented the Manager's Report for December 2012. Monthly income was \$69,247.13 and expenses were \$49,551.10, making the profit \$19,696.03 for the month. The reports shows, 776 total members, 325 Library members and 246 Walters Digital Library members. Digital Library still growing, but income was down slightly.

OLD BUSINESS

Update on Building Auction – Mrs. Radford will contact moving companies to get estimate on cost moving of library in order to have all of our options available for discussion as the year progresses towards the end of our lease on Dec. 31, 2013.

NEW BUSINESS

B. Auction on building (1/11/2013): No minimum bid; auctioneer says new buyers would want to keep ten ants; how much are the liens against the property?; elevators must be fixed; cleaning company has not been paid since August, stopped work; building is roughly ½ occupied. Current KGS lease on building is strong until end of 2013, rent is \$6872/mo; KGS has option to renew for another five years. Mr. Clothier moved to have a *wait & see* policy, citing no advantage to owning the building; motion was passed. Mrs. Radford and Mr. Ramondetta plan to attend auction. If new owners are strong in maintaining building, KGS might renew lease for another five years. Mr. Clothier further moved to form a *New Building Committee* to study the feasibility of moving the library prior to lease expiration, be cause 1- fewer people use the actual building, instead use digital library; 2-make access & parking easier; 3- design new building to allow for technical talks. A new facility would require at least 13,000 sq ft. Sample Library might want to join this venture. Motion to form committee was passed. Chuck Brewer will head up this committee and is studying options.

Mr. Clothier adjourned the meeting at approximately 1:45 PM.

Respectfully submitted, Paul Ramondetta—Secretary

The monthly meeting of the Board of Directors of the Kansas Geological Society was held on February 12, 2013 at the Wichita Petroleum Club. Mr. Clothier called the meeting to order at 11:17 AM.

FINANCIAL REPORT/MANAGERS REPORT

- A. **Treasurer's Report-** Mr. Fisher presented us with the Treasurer's report for January 2013. Mr. Fisher reported that the current CD's earned estimated \$521.73 interest.
- B. **Manager's Report-** Mrs. Radford presented the Manager's Report for January 2013. Monthly income was \$58,631.46 and expenses were \$66,949.86, making the loss \$8,318.40 for the month. The reports shows, 726 total members, 135 Library members and ? Walters Digital Library members. The Digital Library earned \$22,299.00 after expenses. The paper library lost \$8,318.40

OLD BUSINESS

Auction on building (1/11/2012). Mrs. Radford and Mr. Ramondetta attended. Building sold, new landlord is expected be cooperative.

NEW BUSINESS

Tim Hellman is on a committee to study possible purchase of building at 154 N. Topeka. Listed for \$495,000 with 16,112 sq ft. Cost of moving is being studied. Present lease expires at end of the year, but there is an option to renew for another five years. Decision must be made well in advance of the current lease termination. Chuck Brewer is studying options.

ADJOURNMENT- Mr. Clothier adjourned the meeting at approximately 1:15 PM.

Respectfully submitted, Paul Ramondetta—Secretary

A DIFFERENT VIEW OF GEOLOGIC TIME

Lawrence H. Skelton, Geologist
Wichita, Kansas

If geologic time, the 4.54 billion years since the Earth began, could be reduced to a period of just a single year, the calendar of events would be as follows:

January 1 -- 12:00 A.M. – the earth is formed: a molten sphere, too hot for any liquid water or plant or animal. The **Hadean Era of the Precambrian Eon** is underway. During the 740 million years until the Hadean ends, the earth will cool and form a crust. Gravity segregates the heavier metals that sink and form a core. Volcanoes are the rule of the day. Cooling is continuous and when the temperature drops below 100°C. (212°F.), condensed water rains down and creates rivers, lakes and seas in low areas. The earth is pelted by big and small meteorites. One of these, of small planet size, whacks the earth in passing and knocks off a chunk which spins outward a couple of hundred thousand miles and becomes a moon.

February 28 -- 11:50 A.M. – the **Archean Era** begins. Some rocks from this time are preserved until the present. The earth is spinning faster than at present and a “day” is less than the 24 hours we presently experience. The first prokaryotes (single-cell organisms lacking a nucleus) appear. The atmosphere is composed mostly of methane, nitrogen and carbon dioxide which causes the sky to appear red. Banded iron formations (chert/jasper and hematite/magnetite) are being deposited at many places and indicate presence of enough oxygen to bond with iron. Late in the era, proto-continents begin forming up and possibly photosynthesis-capable algae appear on the scene.

June 12—3:56 P.M.– The **Paleoproterozoic Era** arrives and the earth’s land surface is still barren of any life. Prokaryotes dominate but about midway through this era, the first possible Eukaryotes (cells with a nucleus) appear. About halfway through the era, what is present South Africa is whacked by a 10 km (6 mile) diameter meteorite leaving the yet visible 250 km (155 mile) wide Vredefort Crater. 150 million years later, another big meteor slams into an area which now is Sudbury, Ontario, Canada, leaving a 200 km (ca. 125 mile) wide crater. The first three hundred million years experience something new: worldwide glaciation – the so-called Huronian glaciation that occurred in three separate glacial events. One result was an increase in atmospheric oxygen from perhaps 0.5 to 0.7% to around 3.5% that oxidized much of the atmospheric methane. Red beds are common and indicate presence of oxygen. Photosynthesis is encouraged and cyanobacteria (“blue-green algae”) proliferate forming stromatolites. The increased oxygen oxidizes much of the sulfur in seawater and the first gypsum/anhydrite deposits precipitate. The Columbia mega-continent assembles and breaks-up over a 300 million year time frame during this lengthy era.

August 24 – 12:20 A.M. -- Time marches on! 3.4 billion years have elapsed since New Year Day. The **Mesoproterozoic Era** is here. Breakup of Columbia is complete and the megacontinent of Rodinia is assembled with its parts. Thrusting of assembling continental blocks onto the eastern and southern edges of Laurentia result in the Grenville Orogeny, making the proto--Adirondack and proto--Appalachian Mountain chains. The portion of Rodinia that is now the central United States begins to rift threatening to split the continent. Fortunately this “Mid-Century Rift” fails to break completely. Single-cell acritarchs are present. During the later Mesoproterozoic, definite eukaryotic cells capable of sexual reproduction are present and stromatolites still thrive.

October 11 – 6:01A.M. – It’s the **Neoproterozoic Era**! During the first third, Rodinia breaks up. Acritarchs increase in both variety and numbers. The pieces resulting from Rodinia’s breakup have drifted and are clustered around the South and North Pole. The breakup creates the proto-Pacific Ocean known to geology as the Panthalassic Ocean. At the start of the Middle Proterozoic – known as the **Cryogenian Period**, about 750 million years ago, world-wide glaciation begins in both continental clusters and spreads toward the Equator. Nearly the whole earth is covered with ice (“Snowball Earth”). There are at least two separate glacial advances and retreats during the next 215 million years. Glaciation seems to accelerate organic development and by the end of the Cryogenian, acritarchs have become diverse, calcium carbonate absorbing red algae have appeared, dinoflagellates have provided a chemical record of existence, ciliate protozoa such as paramecia are present as are testate (shelled) amoebae and possible fungi have “made the scene.” Simple corals, sea anemones and sponges make their first appearance. The land surface however remains barren. The Neoproterozoic winds up with the **Ediacaran (aka Vendian) Period** starting about 630 million years ago. During the next 30 million or so years, tectonic shifting recombines the continents into a mass named Pannotia clustered around the Equator. Acritarchs and stromatolites are decimated, probably by effects of glaciation but other life forms thrive. Additionally, a variety of bizarre, soft-bodied, multicellular animals of uncertain affinity (the Ediacaran fauna) are found in 20 or so locations around the world. Some are obvious worms and others represent jellyfish and other later phyla. The first lichens (a fungus-alga association) are forming on land. Some other life forms would become extinct by the approaching Cambrian Period. Very late in the Ediacaran Period, Pannotia begins to break apart.

Note: This is the first of a series. The next portion will be in the May-June Bulletin.

Memorials

Dr. John Gries With the death of John Gries, the profession, industry and Wichita State all suffered a great loss. John was truly one of the outstanding geologists of this area.

John was born in Rapid City, South Dakota and as the son of Paul Gries, was fortunate in having an early exposure to geology as his dad was a very distinguished professor of geology at South Dakota School of Mines.

After John graduated from Rapid City High School, he enrolled at The University of Wyoming where he received degrees in Engineering and Geology. In 1970 he received his PhD from the University of Texas.

In 1968 while at the University of Texas, he met and married Robbie Rice. Although they were later divorced, they have remained friends throughout the years. Their daughter, Lynn graduated from medical school and now practices and teaches trauma surgery at the University of Arizona School of Medicine, Tucson.

After John received his PhD he taught for one semester at the University of Texas and also worked for a short time at the Bureau of Economic Geology in Austin. John began teaching at Wichita State in 1971. During his 41 plus years he has taught many different courses, but has specialized in Structural Geology, Field Methods and Geohydrology.

John has served many terms as Head of the Department of Geology and over the years has led the 5-week Field Camp many times. His many activities with the department has not prevented John from lending his very extensive talents to many other entities. He has been the founder and President of the Great Plains Transportation Museum, He also has been the Technical Advisor to the City Manager on Groundwater Pollution as well as working on pollution issues at McConnell Air Force Base. In recent times he developed an interest in Blacksmithing and is a member of the Great Plains Blacksmithing Association. John recently received the prestigious, Teacher of the Year Award from the Kansas Geological Foundation. Many of these activities have involved his



Brian Kirby Former Kansas Geological Society President died January 30, 2013 in Glendale, Arizona at the age of 91. Brian had been President in 1954. He was born in Duncan, Oklahoma on September 16, 1921 and graduated from Great Bend High School in 1939. He served his country as a U. S. Marine from 1942-1946. He graduated from Wichita State in 1948. After graduation Brian joined Sunray Petroleum in 1948 and later was employed by Bay Petroleum. In 1959, now with Tenneco, he transferred to Durango, Colorado where he was elected President of the Durango Petroleum Club. He was very active in local politics and other activities in Durango until he joined Arkansas, Louisiana Gas Company in Holbrook, Arizona. From 1972 until his retirement in 1989, he was a Hydrologist with the State of Arizona.

Brian is survived by four children: Debora Woodrome, Phoenix, Kimberly Friend, Prescott, Arizona, Robert Brian Kirby, Glendale, Arizona, and Bradford Kirby, Sacramento, California. 10 Grandchildren and 14 Great Grandchildren also survive. Services for Brian were held on February 2, 2013, and the Arizona Hospice was the designated memorial contributions recipient.



Robert F. Walters Digital Library

The most complete source for Kansas Data

The screenshot displays the website's search interface with various filters for Section, API Number, County, Operator, Well No., and Depth. Below the filters is a table of well records with columns for Well No., Spool, Location, H.S., E.W., Spool, Completion, Depth, E.I.B., E.I.D.P., E.I.G., and Status. A detailed well log is also visible, including a completion card, company information (Barbara Oil Company), and a detailed log of well data such as casing, tubing, and production.

Log in as our Guest
username: guest
password: guest

www.kgslibrary.com

316-265-8676



SEISMIC ACQUISITION

Check us out at www.breckex.com

Breckenridge Exploration Co., Inc.
 Highway 180 E
 P.O. Box 789
 Breckenridge, TX 76424
 Bus: (254) 559-7566

Denver Colorado Office
 600 17th Street, Ste. 2800 S
 Denver, Colorado 80202-5428
 Bus: (303) 563-5301
 Mob: (254) 559-0587

Sensible Seismic Acquisition in the Mid-Continent and the Rockies



Neuralog
 Turning Paper Into Petroleum

Bryan Mills
 Regional Sales Manager

Solutions for Today's Geoscientists

- Scan, Print & Digitize - Logs & Maps
- Geological Interpretation
- Master E&P Data Management

1.281.240.2525

bmills@neuralog.com · www.neuralog.com



Complete Well Service
 Since 1946

P.O. Box 847
 Pratt, Kansas 67124

Kenneth C. Gates
 President

Kevin C. Gates
 Vice President

1-800-660-7974
 Fax: 620-672-5902

Member KIOGA /AESC

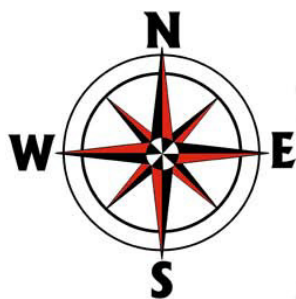
Equipment yard & field office:
 1 3/4 miles North on Highway K-61 from 54 & K-61 Junction

- Experienced Crews
 - Rod & Tubing Service
 - Workover & Completions
 - Swab Tanks
 - Pole Masts-Single and Double Derricks
 - Air Foam Unit
 - Monitor & Water Well Drilling
 - Reverse Circulating Pump & Power Swivel Equipment
 - Statewide Oilfield Hauling
 - Environmental Cleanup
 - Vacuum Trucks/Water Trucks
 - Dirtwork-Dozers, Grader, Backhoe
- Hydrovac Excavation Service**
- Cleaning cattle guards
 - Mud tank cleaning
 - Potholing
 - Trenching
 - Pipeline Crossings

www.prattwell.com



- ◆ Land Leasing Work
- ◆ Permitting
- ◆ Highest Quality GPS Survey & Mapping
- ◆ Shot Hole Drilling
- ◆ Mulchers
- ◆ Cats
- ◆ Recording Crews
- ◆ 2D-3D
- ◆ Wired and Wireless



LSGS

LONE STAR GEOPHYSICAL SURVEYS

TOLL FREE - 855-238-8521
OFFICE - 405-726-8626
FAX - 405-285-8521

HEATH HARRIS
PRESIDENT

WWW.LSTARGEO.COM

HHARRIS@LSTARGEO.COM

PROFESSIONAL DIRECTORY

Kirk Rundle
Consulting Geophysicist
 3D Seismic Design, Acquisition to Processing QC.,
 Interpretation and Analysis, Subsurface Integration
 7340 W. 21st. N., Ste. 100
 Wichita, Kansas 67205

Office: 316-721-1421 Fax: 316-721-1843
 Email: kirk@rundlegeo.com

ROGER L. MARTIN
Independent Petroleum Geologist
 200 E 1st St, Ste 405, Wichita, KS 67202

Office 316-833-2722 Cell: 316-250-6970
 KS Field Cell: 316-655-1227
 Fax: 316-425-3829
 Email: rogermartingeo@yahoo.com


GeoCertified, LLC
 Professional Geological Services
 Hydrocarbon Detectors and Geologist Onsite 24/7

Phone: (913) 441-2311 • Cell: (913) 544-7527
 www.geocertified.com

ALFRED JAMES III
Petroleum Geologist
 Kansas - Colorado - Utah

200 W. Douglas, Ste. 525, Wichita, Kansas 67202

SIPES # 1111
 Office (316) 267-7592
 alfred.james55@yahoo.com

KOGER
 Satellite Data Processing and Analysis
 Oil & Gas Exploration

Consulting David G. Koger
 Expert Witness 3152 Waits • Ft. Worth, TX
 Training & Seminars USA 76109-2330
 www.davekoger.com 817-921-6825 (RITS)

M. Bradford Rine
Honorary Life Member—Kansas Geological Society

Licensed Geologist—KS, #204
 Registered Professional Geologist—Wyo. # 189
 Certified Geologist—A.A.P.G. # 2647
 S.I.P.E.S. # 1584 S.P.E. #109833-4

PROSPECT EVALUATION • PROSPECT GENERATION
 WELLSITE SUPERVISION • EXPERT TESTIMONY • OPERATIONS
 PROPERTY EVALUATION • RESERVOIR STUDIES
 DRLG./COMP. CONSULTATION

Suite 415 Office: (316) 262-5418
 100 S. Main Fax: (316) 264-1328
 Wichita, KS 67202 Cell: (316) 250-5941

WESLEY D. HANSEN
Consulting Geologist
 Well site Supervision
 Geologic Studies
 212 N. Market, Ste 257
 Wichita, Kansas 67202
 Off: (316) 263-7313
 Mobile: (316) 772-6188


 Paul Gunzelman
 President/Geologist

Wichita, Kansas 316.634.6026
 email p.gun@sbcglobal.net


KEVIN L. KESSLER
 INDEPENDENT/CONSULTING PETROLEUM GEOLOGIST

WELLSITE SUPERVISION • GEOLOGIC RESEARCH
 OIL & GAS PROSPECTS
 KANSAS & EASTERN COLORADO

MAILING ADDRESS PHONE
 1199 N. PONDEROSA RD. RES.: (316) 522-7338
 BELLE PLAINE, KS 67013 MOBILE: (316) 706-6636
 EMAIL: KKESSLER1199@AOL.COM

MELLAND ENGINEERING, INC.
Petroleum Engineering & Geological Consulting

James E. Melland, P.E., P.G.
 President
 Office: (620) 241-4621 Fax: (620) 241-2621

jamesm@mellandengineering.com
 www.mellandengineering.com

P.O. Box 841, McPherson, KS 67460

KGJ ENTERPRISES
 Contract Oil & Gas Accounting &
 Office Management

Kathryn G. James, MBA (316) 775-0954
 4278 SW 100th ST. (316) 250-5989
 Augusta, KS 67010 kgjames@onemain.com

**Your AD would look really
 good here!!**

PROFESSIONAL DIRECTORY

Blue Ribbon Drilling, LLC

PO Box 279, Dewey, OK 74029

Phone and Fax: 918-534-2322

John's Cell Phone: 918-440-9639

Larry's Cell Phone: 918-440-9638

Jeff's Cell Phone: 918-440-9647

Email: johnroutree@bratco-operating.com



Geotech & Design Services

7171 Highway 6 North, #202

Houston, Texas 77095

Data digitizing, drafting & computer graphics



Tel: (281) 858-7100

Fax: (281) 500-8534

heather.wilson@geotechmap.net

Heather Wilson
Account Manager

www.geotechmap.net



NEW TECHNOLOGIES

— IN THE —

MID-CONTINENT

AMERICAN ASSOCIATION OF PETROLEUM GEOLOGISTS

MID-CONTINENT SECTION MEETING

WICHITA - OCTOBER 12-15, 2013

We Invite You To join

Kansas Geological Foundation

*\$50.00 membership is
tax deductible*

Call 316-265-8676

*Or send checks to:
Kansas Geological Foundation
212 N. Market, Ste. 100
Wichita, KS 67202*

The Following Are For Sale

The following data collections are available for sale:

Kansas Completion Cards:

- 1 set in cabinets from an established Wichita exploration company.
- 1 set in boxes from an established Wichita explorationist (West Ranges only).

Oklahoma Completion Cards:

- 2 sets in boxes from established Wichita exploration companies.
- Also, Oklahoma and Texas logs on microfiche.

Call: 316-265-8676

**Kansas Geological Foundation
Video / DVD Collection**

The KGF has an extensive collection of videos available for check-out at no charge.

Only pay for shipping back.

These are ideal for classroom or general public viewing.

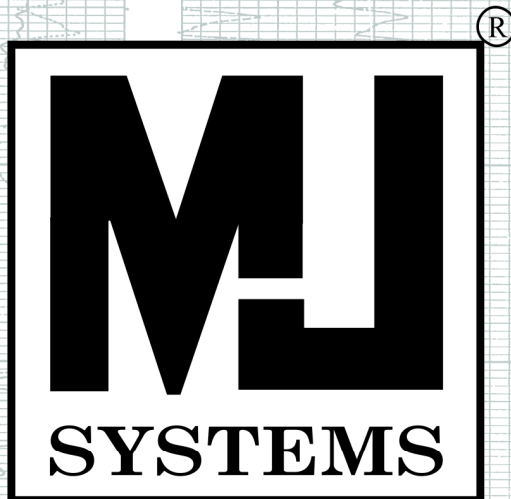
See the web for titles & descriptions
www.kgfoundation.org

Call 316-265-8676

Ask for Janice to check out videos



2013 KGS President Dave Clothier



Logs Since 1971

www.mjlogs.com

6 MILLION LOGS

DEPTH REGISTERED

**INTERNET
DOWNLOADS**

**ONLINE
SEARCH**

SEARCH AND FILTER BY DEPTH

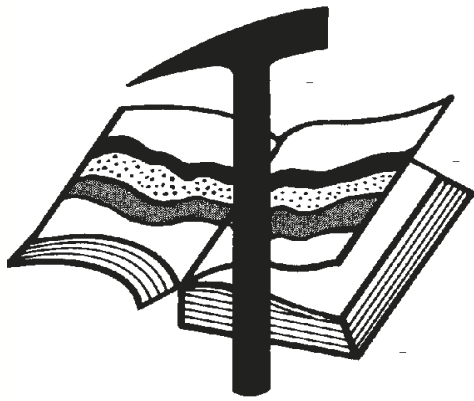
OWN THE LOGS

LogSleuth Software

CLUB WEB

WEB SITE CATALOGUE

1-800-310-6451



Kansas Geological Foundation

Web Site: www.kgfoundation.org

**212 North Market
Wichita, Kansas 67202**

A not-for-profit educational and scientific corporation

GOALS:

- promote geology and earth science
- preserve geological records
- establish memorials and endowments
- support field trips and seminars
- financial aid and grants to students

PLEASE HELP SUPPORT THE FOUNDATION

Kansas Geological Foundation Services

The Kansas Geological Foundation provides the following services as a part of the organization's commitment to educate the public regarding earth science.

Speaker's Bureau

A list of speakers available to talk about various aspects of geology may be obtained by contacting Janice Bright at the KGS Library, 265-8676. This service is free to the public.

DVD/Videotape Library

The KGF maintains a DVD & videotape library focused primarily on the various fields of earth science. These tapes may be checked out without charge by the public. To obtain a list of tapes, please contact the KGS Library, 212 N. Market, Ste. 100, Wichita, KS 67202, or call Janice Bright at 265-8676.

The Kansas Geological Foundation was founded in March, 1989 as a not-for-profit corporation under the guidelines of section 501(c)(3) of the tax code to provide individuals and corporations the opportunity to further the science of geology. It is dedicated to providing charitable, scientific, literary and educational opportunities in the field of geology for the professional geologist as well as the general public.

KGF can receive in-kind donations through which the donor may receive a tax deduction. Of equal importance, the KGF provides the financial resources to sort, process and file this data at the KGS library. If you have a donation to make, please contact the KGF at 265-8676.

Your tax-deductible membership donation helps to defray the cost of processing donations and to support public education programs about the science of geology. Annual membership begins at \$50.00 per year. Donations of \$100.00 or more are encouraged through the following clubs:

Century Club	\$ 100 to \$ 499
\$500 Club	\$ 500 to \$ 999
Millennium Club	\$1000 to \$5000
President's Club	\$5000 and over

WESTERN KANSAS
SOUTHERN NEBRASKA



EASTERN COLORADO
OKLAHOMA & TEXAS PANHANDLES

10 Drilling Rigs

For contract information, please contact:
Blaine Miller / Drilling Department
316-858-8607 (Direct) or 316-267-3241

250 N. Water #300—Wichita, KS 67202

**10 Well Service Rigs &
Roustabout Services**

For contract information, please contact:
Alan Hays, Well Service Sprvsr.
785-421-2103 or 785-567-8739 (cell)

East Highway 24—Hill City, KS 67642

DUKE
DRILLING COMPANY

ROTARY DRILLING CONTRACTOR



620 Hubbard PO Box 823
Great Bend, KS 67530
Phone 620-793-8366

100 S. Main, Ste. 410,
Wichita, KS 67202
Phone 316-267-1331
Fax 316-267-5180

TOMCAT DRILLING, LLC
Rotary Drilling Contractor

5 Rotary Rigs Serving
Kansas, Oklahoma, and
the Texas Panhandle

Tim Sanders (316) 259-1652 cell
8301 East 21st North, Suite 360 (316) 262-8554 office
Wichita, KS 67206 (316) 267-0749 fax

  tjsanders@tomcat.kscxmail.com
www.TomcatDrilling.com

Great Bend (620) 793-5861 Ness City (785) 798-3843 Medicine Lodge (620) 886-5926

Acidizing Available at Medicine Lodge District

Russell (785) 483-2627 Oakley (785) 672-3452

Lockhart Geophysical Company

Call (303) 592-5220 FAX (303) 592-5225
Or E-mail lockden@xpert.net

2D & 3D Seismic Acquisition
Vibroseis Specialists

JAPEX GDAPS-4 Distributed System

We'll give you seismic excellence

MBC

WELL LOGGING & LEASING
UNMANNED GAS DETECTORS
MUD LOGGING
CERTIFIED INSTRUMENT TECH
SERVING THE KAN-O-TEC AREA SINCE 1990

AUSTIN GARNER **MARLA GARNER**
24-HOUR PHONE (620) 873-2953
MEADE, KANSAS

FULL LINE SUPPLY STORE
With Pump Shop, New & Used
Pipe, Equipment and Fittings
Exclusive S-55 casing source

STORES:

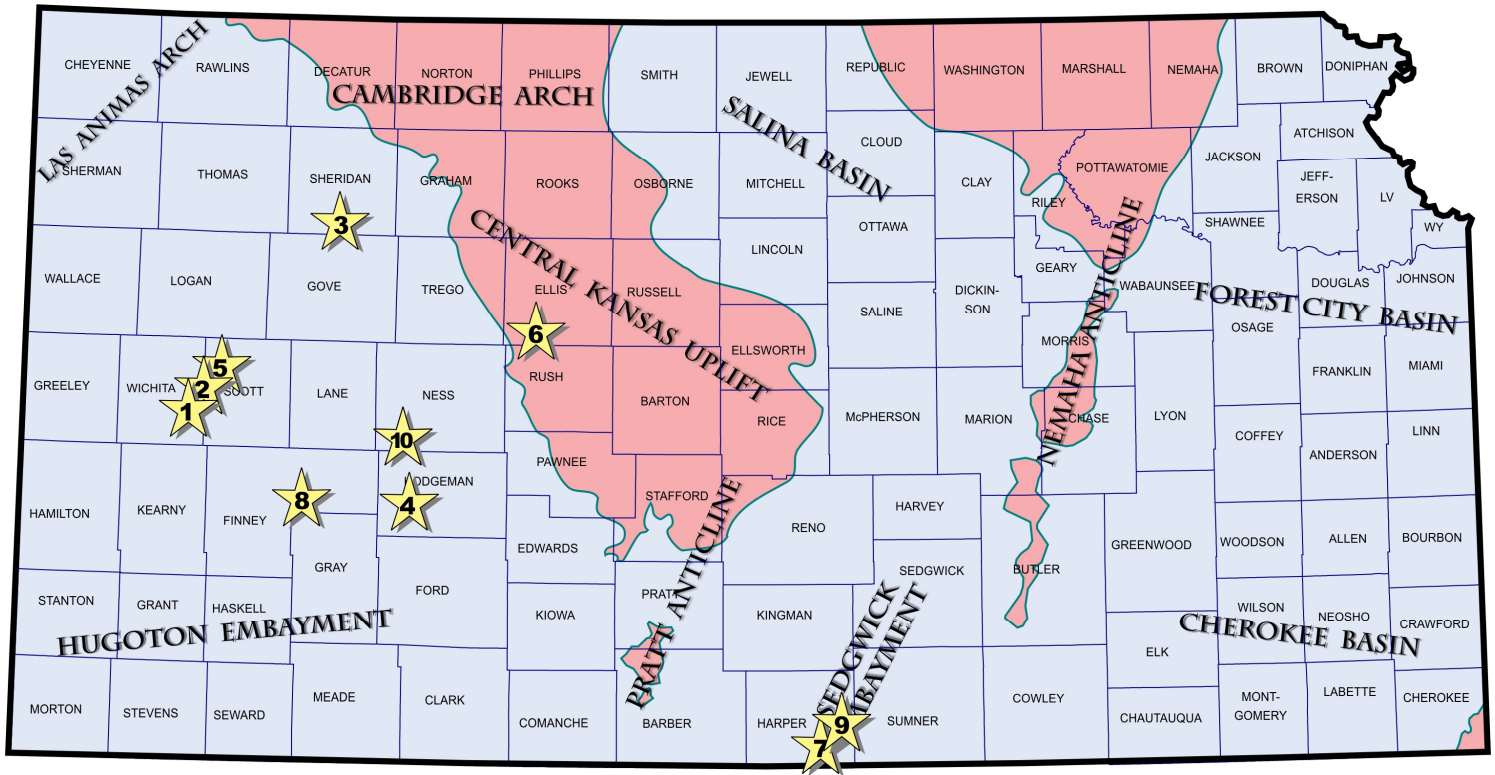
Chanute, KS	620-431-6500	El Dorado, KS	316-321-9323
Garden City, KS	877-976-1700	Hays, KS	785-650-0199
Hugoton, KS	620-428-6604	Ness City, KS	800-589-5733
Spivey, KS	620-532-5261	McCook, NE	308-345-1542

SALES OFFICES:

Wichita, KS	800-777-7672
Great Bend, KS	316-792-3130
Cell:	316-786-4255
Denver, CO	303-319-6753
Williston, ND	701-570-9255

Exploration Highlights

By John H. Morrison, III
Independent Oil & Gas



(1) SDOCO LLC, Littleton (CO), has established the Rees Ranch oil field in Wichita County. The 7-19 Rees Ranch, (API 15-203-20191), located in the E/2 W/2 NE of section 19- T19s- R35W, is producing an undisclosed amount of oil from an unknown zone. The well had initially targeted the Mississippian formation as the main zone of interest, however, the Lansing-Kansas City, Marmaton and Cherokee (Johnson Zone) zones are also of interest in the immediate area. Operator stopped drilling at a total depth of 5260 ft. No details have been released.

(2) The Rees Ranch oil discovery lies nearly five miles from the closest recognized oil production in the county. SDOCO LLC has already drilled one offset well and has staked a third well in the quarter-section. Lario Oil & Gas Company, Wichita (KS), has drilled one offset and staked a second well about one-quarter mile to the north of the discovery well in section 18. The new unnamed oil field is located about six and one-half miles south of the Marienthal, Kansas.

(3) Apache Corporation, Houston (TX), has successfully completed their first horizontal well in the State with the completion of the 31-41-1H Zerr (API 15-179-21307), spotted 160 ft FNL & 2655 ft FEL of section 31-T10s- R28W, in Sheridan County, northwest Kansas. The wildcat well found new Mississippian limestone reserves nearly one and one-quarter miles south of oil production in the RJS South field (Lansing-Kansas City oil), and same

distance northwest of oil production in the Grainfield pool (also LKC oil) in Gove County. Closest known Mississippian production lies over twelve miles away from discovery site. The well was drilled to a true measured depth of 8367 ft with the lateral running in a southerly direction to around 330 ft FSL & 2738 ft FEL in the same section. Details are confidential. Field area lies about two miles north of Grainfield, Kansas.

(4) Redland Resources, Inc., Oklahoma City (OK), has discovered Mississippian oil deposits with the completion of the 35-4 Gleason API 15-083-21799), located in the SE NW NW of section 35- T23s- R25W, Hodgeman County. The wildcat well found new oil reserves at site located nearly one and one-quarter miles west of the Gray Hawk Northwest field. Redland established the field in mid 2011 when the 25-1 Andrew (API 15-083-21709) was completed for 120 barrels of oil per day from Mississippian depth of 4752 to 4756 ft. No completion details have been released on the new Gray Hawk West pool discovery. Duke Drilling tools bottomed the well at a total depth of 4950 ft. Field area lies about four miles south and seven miles west of Jetmore, Kansas.

(5) Hartman Oil Company, Inc., Wichita (KS), is producing an unknown amount of crude oil from the Marmaton formation at the 1-22 Wilkinson (API 15-171-20913), located in approximately SE SW SW in section 22-T17s- R34W, in Scott County. H2 Drilling tools drilled the well to a total depth of 4950 ft at site located over one and

one-quarter miles northeast of Marmaton pay in the Isbel Northwest field, or about four and one-half miles north of the town of Modoc, Kansas. Completion details remain confidential. The new field has been named Isbel North.

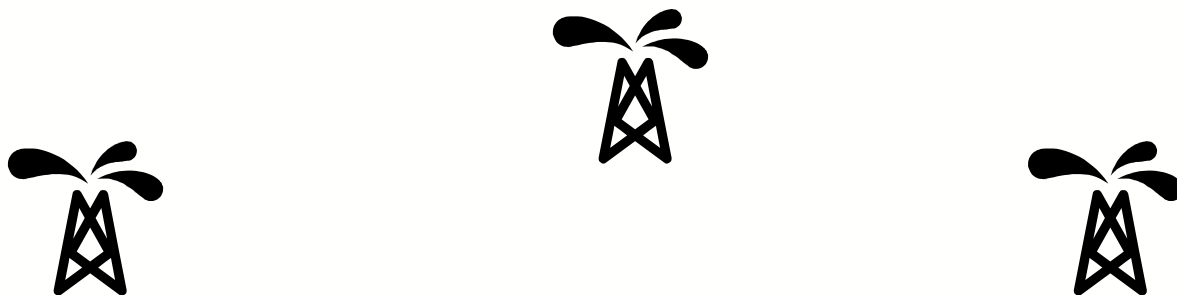
(6) Hertel Oil Company, Inc., Hays (KS), reports the discovery of Lansing-Kansas City oil deposits at their 1 Larry (API 15-051-26400) in the NE SE NE of section 15- T15s- R19W, Ellis County. Operator stepped-out over one and one-quarter miles northwest of production in the multipay Martina oil field to find the new reserves. Discovery Drilling's Rig 4 drilled the well to a total depth of 3700 ft. The new Martina North field is situated about two and one-half miles north and four miles west of Schoenchen, Kansas.

(7) SandRidge Exploration and Production LLC, Oklahoma City (OK), has established another Mississippian oil field in southeastern Harper County with the completion of the 1-7H Turner 3406 which was drilled over one and one-quarter miles from closest producing wells in the area. Well site is located 250 ft FSL & 660 ft FEL of section 7- T34s- R6W, about three and one-half miles southeast of Harper, Kansas. Lariat Services Rig 39 drilled the horizontal lateral in a northerly direction to a measured depth (MD) of 11,534 ft. Bottom hole location was 2265 ft FSL & 668 ft FEL in section 6. 'Toe' of the lateral was called at a true vertical depth of 4580 ft. The wildcat well is producing an undisclosed amount of crude from liner perforations made extending from 5316 to 11,002 ft (MD). Completion details are confidential. The new field has been named Wildcat Creek North.

(8) Elsewhere in Finney County, SandRidge has stepped-out over one mile to the east of the multipay oil and gas production in the Stewart field to locate new Mississippian oil reserves. Discovery was made at the 1-9H Lorimer 2330, located 200 ft FNL & 400 ft FWL in section 9- T23s- R30W. Lateral was drilled in a southerly direction ending 337 ft FSL & 567 ft FWL in section 9. Measured depth of the lateral was 9242 ft with 'toe' being called at 4828.27 ft in vertical depth. The liner was perforated from a measured depth between 5111 to 8889 ft. Details are confidential. The new Stewart East oil field lies about six miles north and 12 miles east of Garden City, Kansas.

(9) In conclusion, SandRidge has established a new Mississippian oil field in eastern Harper County. The 1-27H Cooper 3305, located 250 ft FNL & 660 ft FEL in section 27- T33s- R5W, is producing an unknown amount of crude from perforated liner between 4930 to 8098 ft. Operator drilled the horizontal well to a measured depth of 8518 ft with lateral 'toe' called at 4491 ft vertical depth. The lateral ended 608 ft FSL & 663' FEL in the same section. Completion details are confidential. The new Spring Branch oil field area lies over three miles east of the Stohrville Northeast oil and gas field, or five and one-half miles northeast of Bluff City, Kansas.

(10) Encana Oil & Gas (USA), Plano (TX), has completed their third horizontal well in Ness County, and their fourth horizontal well in Kansas, with the completion of the 2-1H Kerr, spotted 249 ft FSL & 1989 ft FEL in section 1- T20s- R25W. The well found new oil reserves one and one quarter miles northeast of the Guzzlers Gulch North (Marmaton, Cherokee, Mississippian) oil field. The new field has been named Wesley South. Precision Drilling tools drilled the horizontal lateral to a bottom hole location (BHL) in the north half of the section. Exact end was not reported, however, the proposed BHL location was 330 ft FNL & 2150 ft FEL. Top of the Mississippian formation was called at 4711 (-2339 kb) and true measured depth reached 8805 ft. Perforation depths were not released. Field area is located seven and one-half miles southeast of Laird, Kansas.

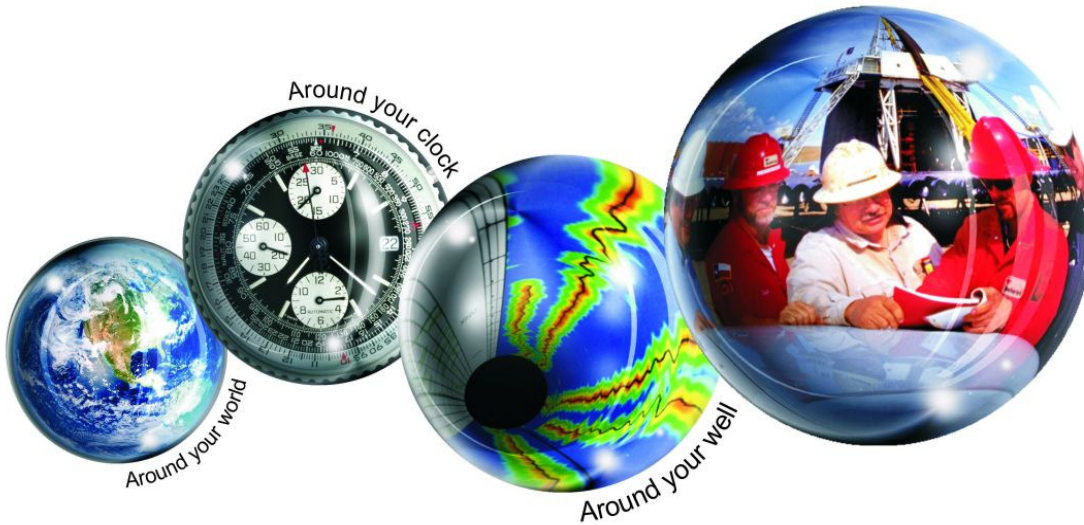


Kansas Geological Foundation Memorials

KGS Member	Date Deceased	Memorial Established	KGS Member	Date Deceased	Memorial Established
Dan Bowles	09/89	1990	Jerold E. Jesperson	06/01	2001
John Brewer	10/89	1990	William A. Sladek	06/01	2001
George Bruce	08/89	1990	Harlan B. Dixon	06/01	2001
Robert Gebhart	01/90	1990	Edward B. Donnelly	08/01	2001
Ray Anderson, Jr.	11/90	1990	Richard P. Nixon	02/02	2002
Harold McNeil	03/91	1991	Robert W. Frensley	12/01	2002
Millard W. Smith	08/91	1991	Gerald W. Zorger	01/02	2002
Clinton Engstrand	09/91	1991	Don L. Calvin	03/02	2002
M.F. "Ted" Bear	10/91	1991	Claud Sheats	02/02	2002
James & Kathryn Gould	11/91	1991	Merle Britting	2002	2002
E. Gail Carpenter	06/91	1993	Harold Trapp	11/02	2002
Benton Brooks	09/92	1992	Donald M. Brown	11/02	2003
Robert C. Armstrong	01/93	1993	Elwyn Nagel	03/03	2003
Nancy Lorenz	02/93	1993	Robert Noll	09/03	2003
Norman R. Stewart	07/93	1993	Benny Singleton	09/03	2003
Robert W. Watchous	12/93	1993	Jay Dirks	2003	2003
J. George Klein	07/94	1994	J. Mark Richardson	02/04	2004
Harold C.J. Terhune	01/95	1995	John "Jack" Barwick	02/01	2004
Carl Todd	01/95	1995	Richard Roby	03/04	2004
Don R. Pate	03/95	1995	Ruth Bell Steinberg	2004	2004
R. James Gear	05/95	1995	Gordon Keen	03/04	2004
Vernon Hess	06/95	1995	Lloyd Tarrant	05/04	2004
E. K. Edmiston	06/95	1995	Robert J. "Rob" Dietterich	08/96	2004
Jack Rine	07/95	1995	Mervyn Mace	12/04	2004
Lee Cornell	08/95	1995	Donald Hoy Smith	04/05	2005
John Graves	10/95	1995	Richard M. Foley	06/05	2005
Wilson Rains	10/95	1995	Wayne Brinegar	06/05	2005
Heber Beardmore, Jr.	09/96	1996	Charles B. Moore	09/96	2005
Elmer "Lucky" Opfer	12/96	1996	Jack Heathman	05/06	2006
Raymond M. Goodin	01/97	1997	Charles Kaiser	09/06	2006
Donald F. Moore	10/92	1997	Rod Sweetman	08/06	2006
Gerald J. Kathol	03/97	1997	Karl Becker	10/06	2006
James D. Davies	08/88	1997	Frank Hamlin	10/06	2006
R. Kenneth Smith	04/97	1997	Marvin Douglas	12/06	2006
Robert L. Dilts	05/97	1997	Robert W. Hammond	04/07	2007
Delmer L. Powers	06/72	1997	Eldon Frazey	04/07	2007
Gene Falkowski	11/97	1997	Pete Amstutz	05/07	2007
Arthur (Bill) Jacques	01/98	1998	Charles Spradlin	05/07	2007
Bus Woods	01/98	1998	Donald R. "Bob" Douglass	09/07	2007
Frank M. Brooks	03/98	1998	Vincent Hiebsch	11/07	2007
Robert F. Walters	04/98	1998	Glen C. Thrasher	03/08	2008
Stephen Powell	04/98	1998	Peg Walters	06/08	2008
Deane Jirrels	05/98	1998	Theodore "Ted" Sandberg	07/08	2008
William G. Iversen	07/98	1998	James Ralstin	11/08	2008
Ann E. Watchous	08/98	1998	Earl Brandt	04/09	2009
W.R. "Bill" Murfin	09/98	1998	Walter DeLozier	05/09	2009
Donald L. Hellar	11/98	1998	Don D. Strong	01/10	2010
Joseph E. Rakaskas	01/99	1999	John Stone	02/10	2010
Charles W. Steincamp	02/99	1999	Craig Caulk	03/10	2010
Robert and Betty Glover	10/96	1998	Joseph E. Moreland, Jr.	03/10	2010
Howard E. Schwerdtfeger	11/98	1999	Gene Garmon	03/10	2010
W. W. "Brick" Wakefield	03/99	1999	James F. Dilts	05/10	2010
V. Richard Hoover	01/00	2000	Jerry Pike	05/10	2010
Warren E. Tomlinson	01/00	2000	Donald Hollar	06/10	2010
James A. Morris	01/00	2000	Delbert Costa	08/10	2010
Eric H. Jager	03/00	2000	John Tanner	08/10	2010
Kenneth W. Johnson	03/00	2000	William (Bill) Owen	09/10	2010
Dean C. Schaake	03/00	2000	Harold (Hal) Brown	10/10	2010
Fred S. Lillibridge	05/00	2000	Edmund G. Lorenz	11/10	2010
Jerry A. Langrehr	07/00	2000	Thomas E. Black	05/11	2011
Clark A. Roach	07/00	2000	Wayne E. Walcher	07/11	2011
Floyd W. "Bud" Mallonee	10/00	2000	Henry F. Filson	07/11	2011
Ralph W. Ruuwe	09/00	2000	Thomas Ray	07/11	2011
Robert L. Slamal	02/01	2001	Edgar E. Smith	09/11	2012



Weatherford®



All Around You

Weatherford has always been driven by your needs.

Now, with the addition of Precision Energy Services we're continuing to build a world of skills, services and technologies that revolve – and evolve – around you.

The result?

An expanded global network of 25,000 people, 730 service bases and 87 manufacturing facilities in 100 countries.

This increased local knowledge and service is there to support you anywhere, anytime. From midday in the Middle East to midnight in the middle of nowhere.

And with greatly strengthened capabilities in the critical evaluation skills of directional drilling and wireline logging, we can do even more to improve the profitability and productivity of your wells.

To see how our sphere of services can work for you, visit www.weatherford.com or contact either your Weatherford or former Precision Energy Services representative.


Drilling | Evaluation | Completion | Production | Intervention

© 2006 Weatherford International Ltd. All rights reserved. Incorporates proprietary and patented Weatherford technology.

CHANGE SERVICE REQUESTED

KGS BULLETIN
 March—April 2013

March 2013

Sun	Mon	Tue	Wed	Thu	Fri	Sat
					1	2
3	4	5 Tech Talk	6	7	8	9
10  time change	11	12 KGS Board Mtg.	13	14	15	16
17	18	19 Tech Talk	20	21	22	23
24	25	26 Tech Talk	27	28	29	30
31						

April 2013

Sun	Mon	Tue	Wed	Thu	Fri	Sat
	1	2 Tech Talk	3	4	5	6
7	8	9 KGS Board Mtg.	10	11	12	13
14	15	16 Tech Talk	17	18	19	20
21	22	23 Tech Talk	24	25	26	27
28	29	30				